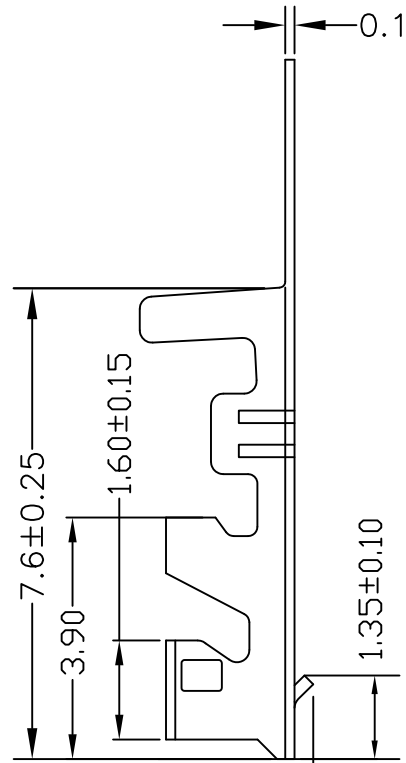
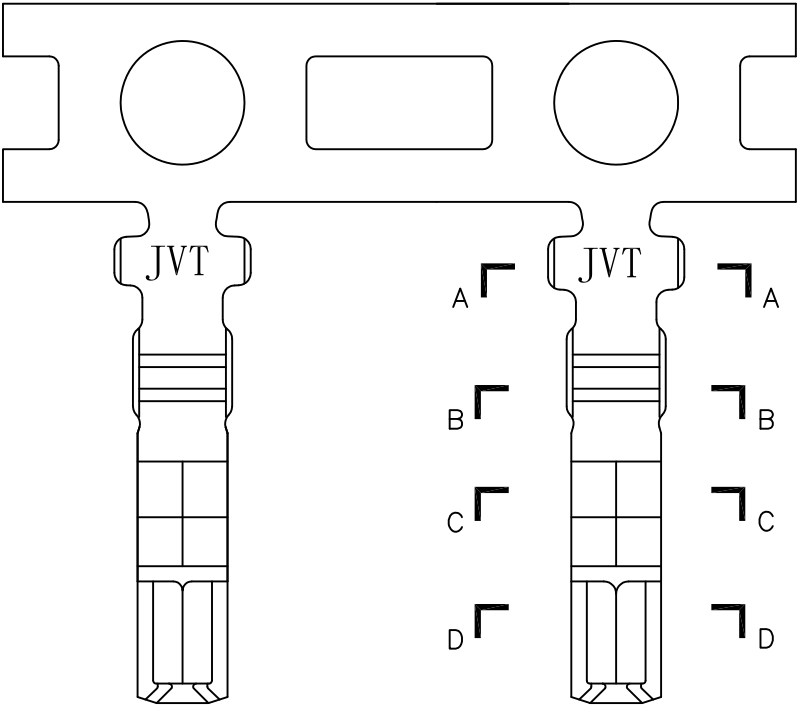


A B C D E F G H

1



- TERMINAL
- Applicable wire: AWG#22~28
 - Material: Phos.Bronze
 - Finish: Half Gold Tin 1U" or Tin plated
 - Thickness: 0.15mm
 - Q'ty: 10000 pcs/reel

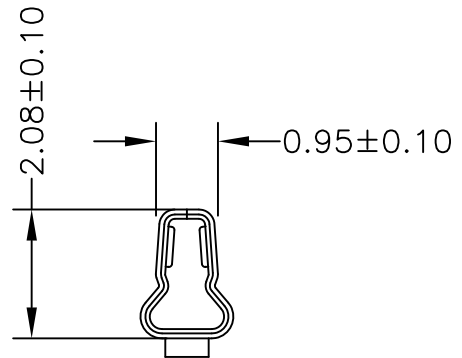
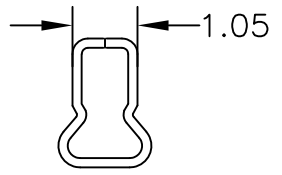
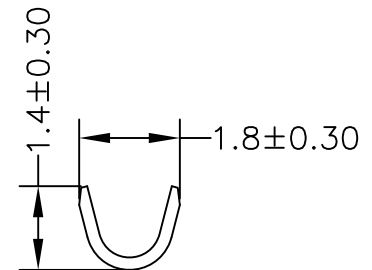
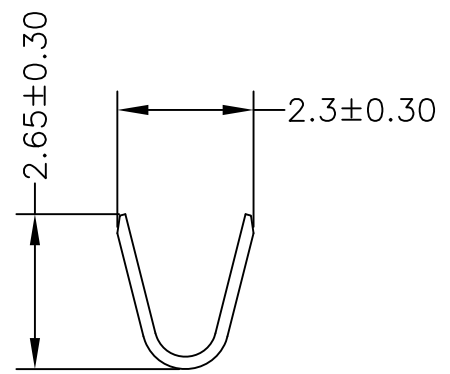
JVT2038TP-XXX

logo
系列码
端子
磷铜

S-先冲后镀
E-先镀后冲
SN-镀亮锡
GP-镀半金

2

3



SECTION A-A

SECTION B-B

SECTION C-C

SECTION D-D

GENERAL TOLERANCE	
0	±0.40
.0	±0.30
.00	±0.20
.000	±0.10

4

版本	变更内容	日期	单位	mm	比例	1:1	日期	20140110
----	------	----	----	----	----	-----	----	----------



核准	审核	设计	品名	PAD2.0MMTER		
	bolly	李勇军	料号	JVT2038TP-XXX		
			图名	031	版本	A

A B C D E F G H